

Light efficiency:

79 Lumen/Watt

Light quality:

CRI: 81.5

Color temperature:

3052 K

Output: 3252 lm

Peak: 4633 cd

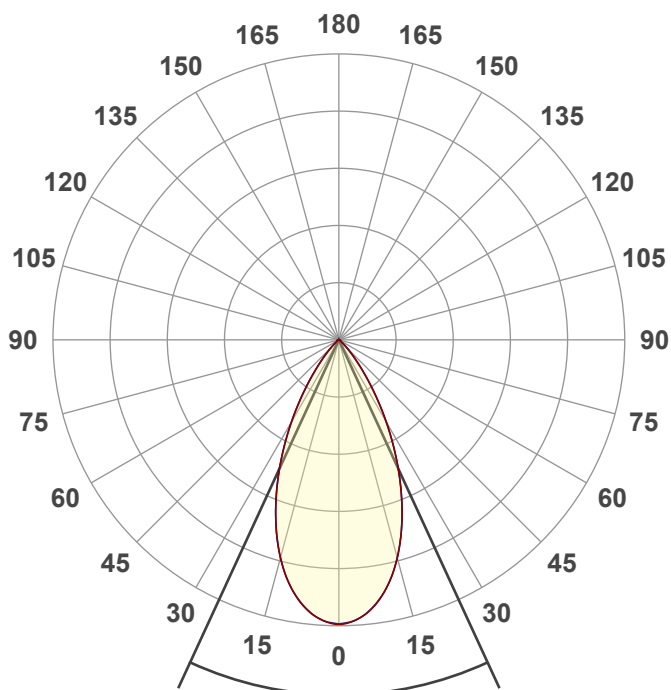
Power: 41.1 W

PF: 0.99



NU3-RD-SW-40LM-30K-80-55D-HET-WH-WH

Date and time:
2/21/2023 9:49:49 AM



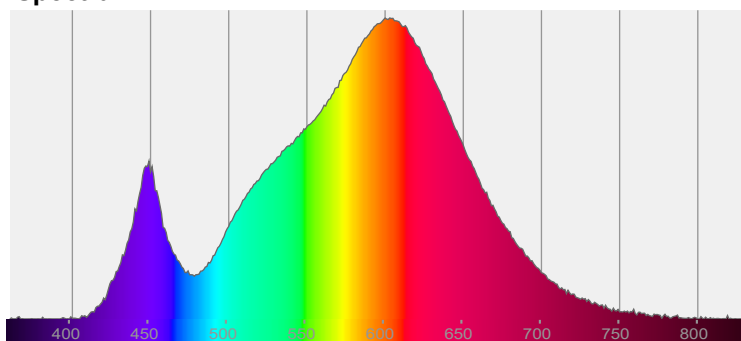
Beam angle

49.5°

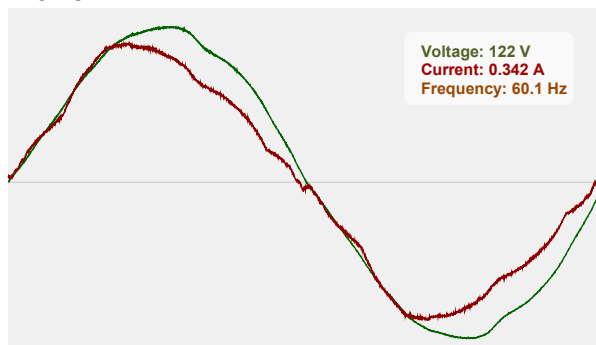


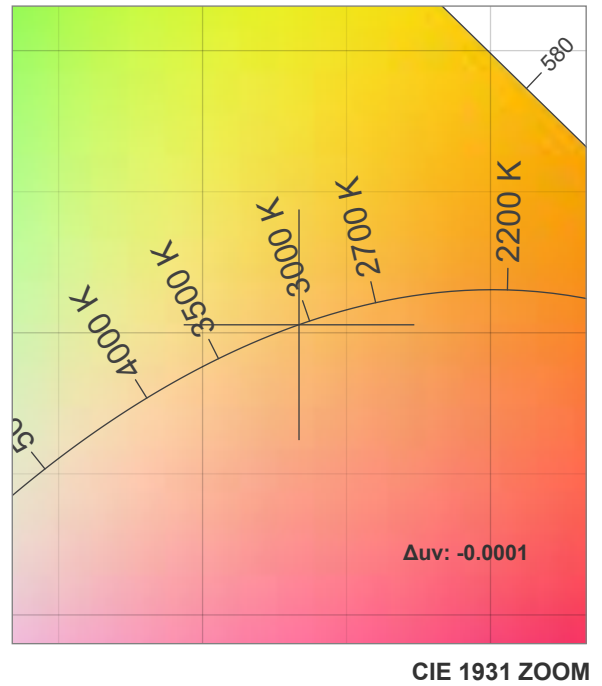
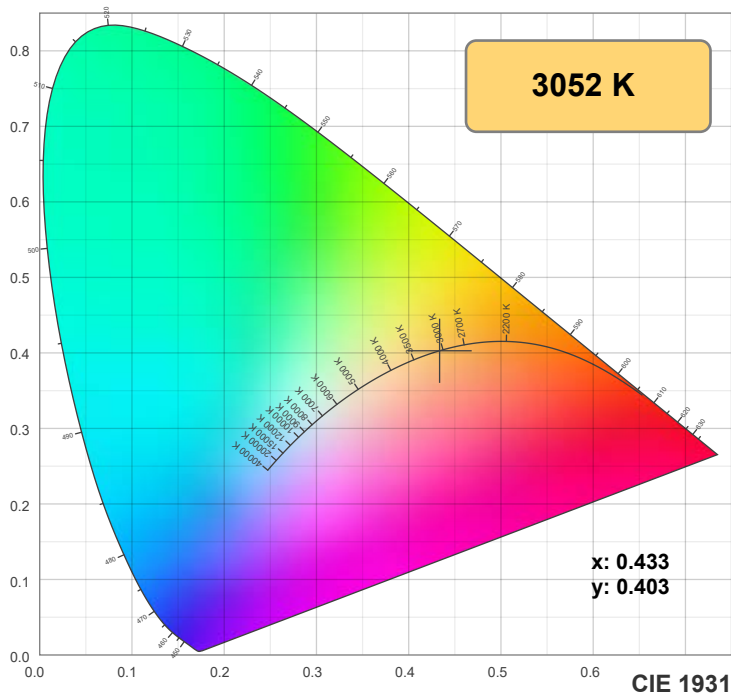
CIE 1931
x: 0.433
y: 0.403

Spectra

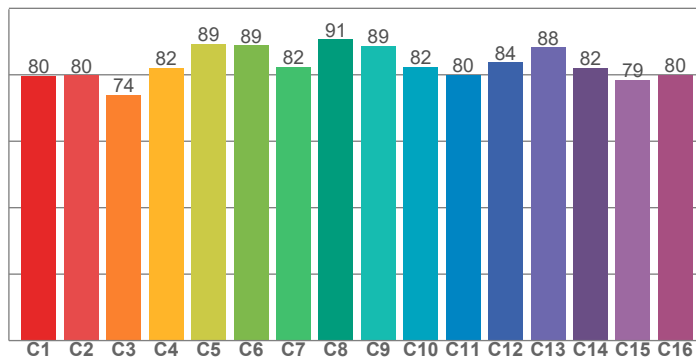


Power

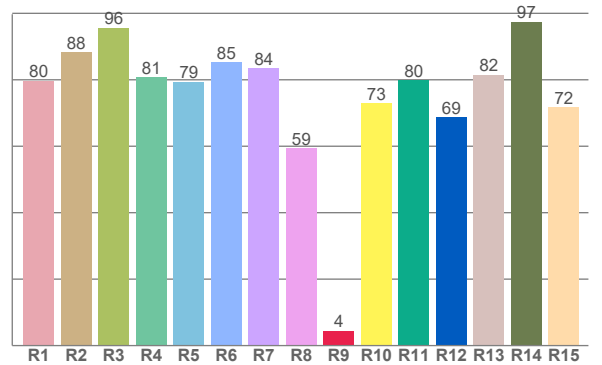




TM30: 83.1



CRI: 81.5 (R1-R8)



CRI R values, only R1-R8 are used to calculate final CRI value

R1	R2	R3	R4	R5	R6	R7	R8	R9	R10	R11	R12	R13	R14	R15
79.7	88.3	95.7	80.8	79.4	85.2	83.5	59.3	4.4	73.0	79.8	68.7	81.5	97.4	71.8

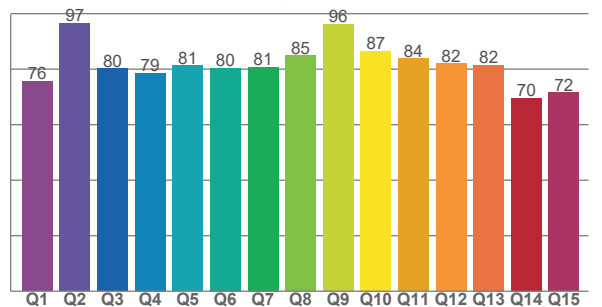
TM30 C values, 16 binned values out of total of 99 C values

C1	C2	C3	C4	C5	C6	C7	C8	C9	C10	C11	C12	C13	C14	C15	C16
79.7	79.8	74.0	82.1	89.4	88.8	82.4	90.6	88.8	82.4	80.0	83.7	88.3	82.1	78.5	80.0

CQS Q values

Q1	Q2	Q3	Q4	Q5	Q6	Q7	Q8	Q9	Q10	Q11	Q12	Q13	Q14	Q15
75.6	96.5	80.3	78.6	81.2	80.5	80.8	84.9	96.1	86.6	83.8	82.1	81.5	69.7	71.6

CQS: 80.5



Color parameters

Color temperature	Color rendering index	Red component	Color fidelity	Color gamut	Color quality scale	Color coordinate cie 1931	Color coordinate cie 1931	Color coordinate	Color coordinate	Color deviation from black body
CCT	CRI	CRI R9	TM30 Rf	TM30 Rg	CQS	x	y	u	v	Δuv
3052 K	81.5	4.4	83.1	97.8	80.5	0.433	0.403	0.249	0.347	-0.0001

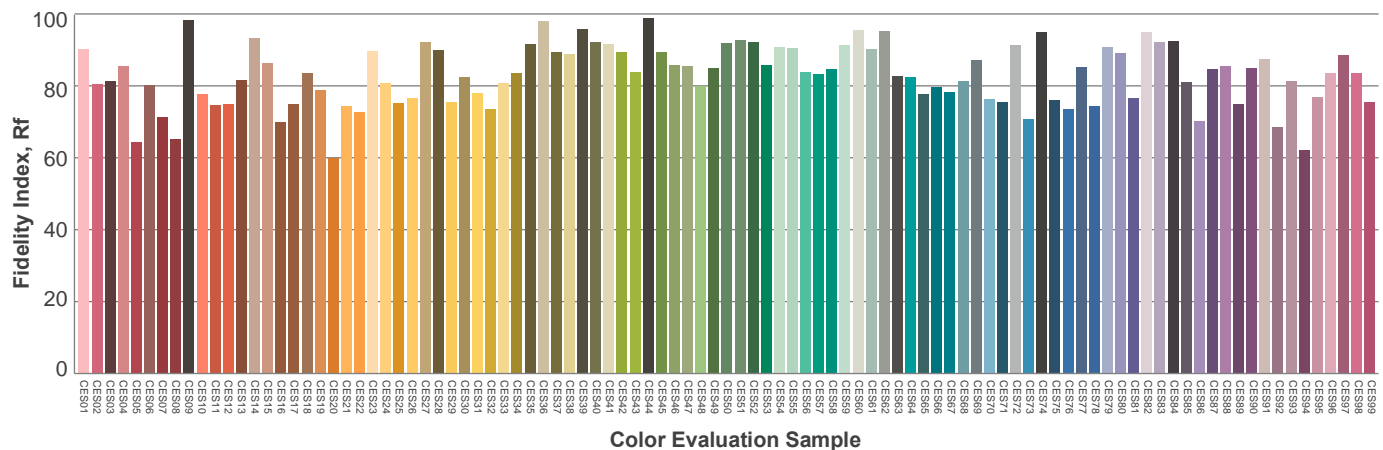
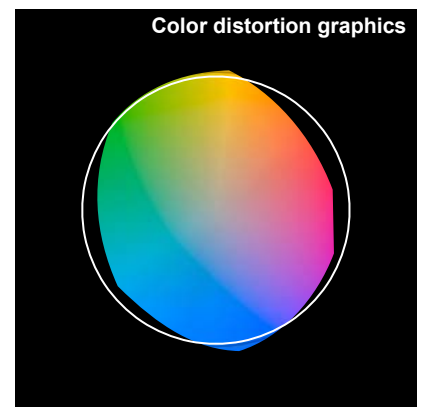
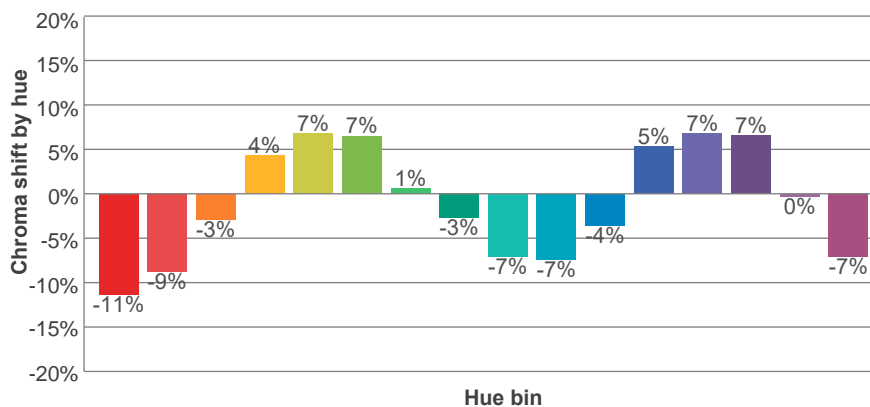
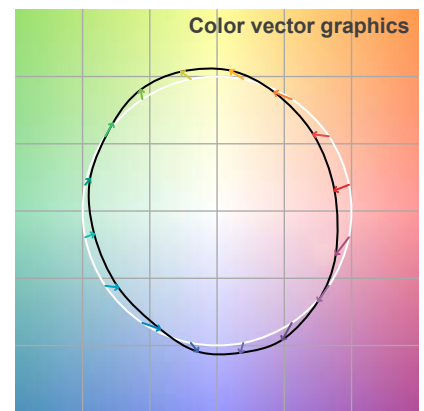
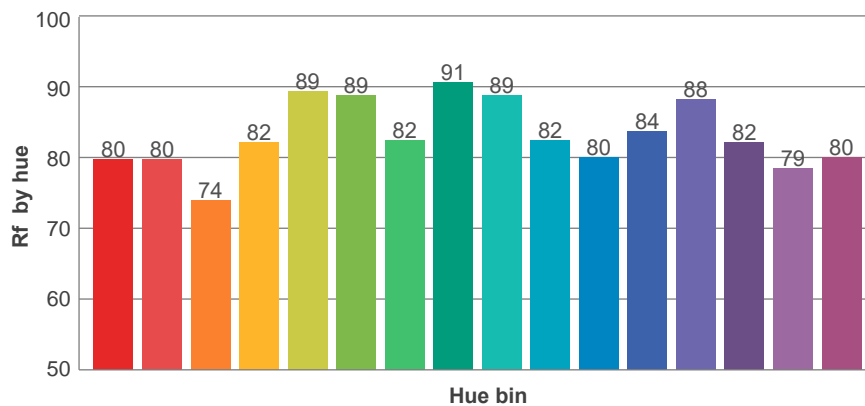
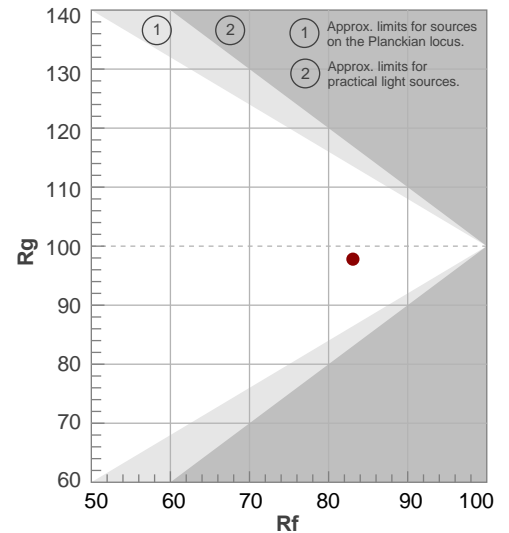
Rf 83.1

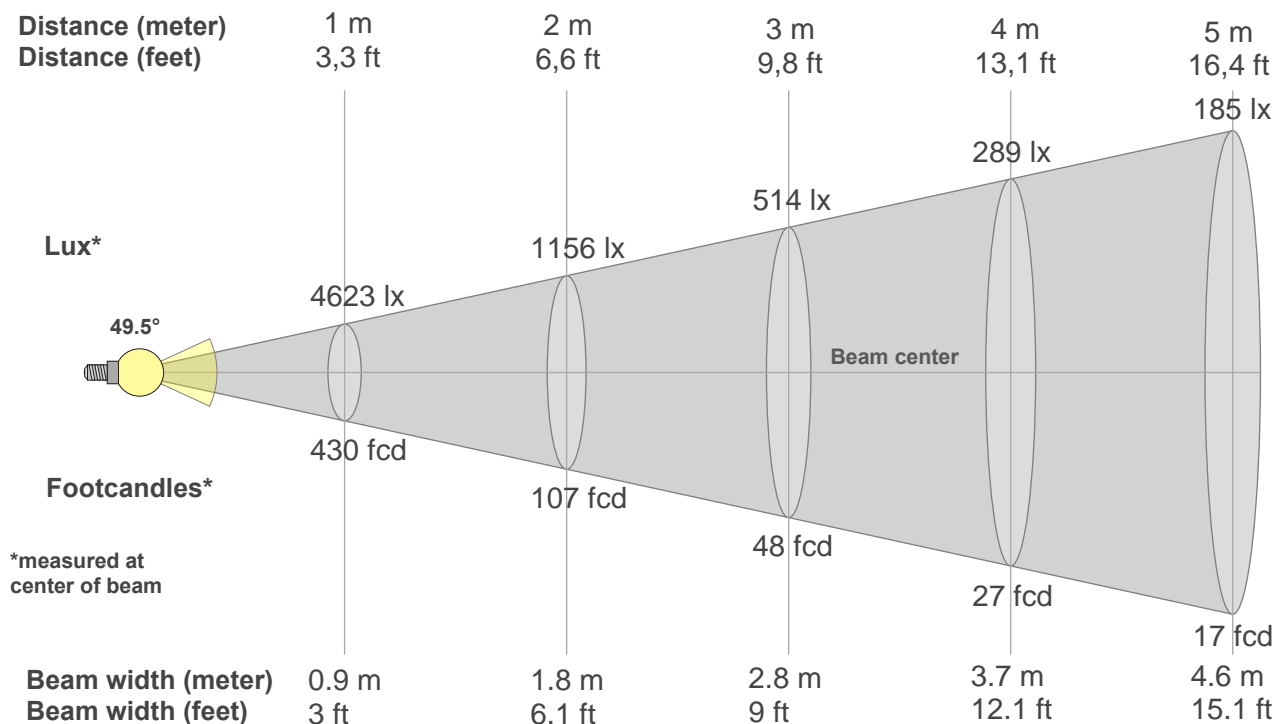
Fidelity index Rf

Rg 97.8

Gamut index Rg

Hue Bin	R _f	Graphic shifts (%)	
		Chroma	Hue
1	80	-11%	-2%
2	80	-9%	8%
3	74	-3%	14%
4	82	4%	11%
5	89	7%	6%
6	89	7%	-3%
7	82	1%	-11%
8	91	-3%	-5%
9	89	-7%	-1%
10	82	-7%	6%
11	80	-4%	14%
12	84	5%	6%
13	88	7%	-4%
14	82	7%	-13%
15	79	0%	-14%
16	80	-7%	-14%





Beam intensities from 1-20m

1m	2m	3m	4m	5m	6m	7m	8m	9m	10m	11m	12m	13m	14m	15m	16m	17m	18m	19m	20m
3.3ft	6.6ft	9.8ft	13.1ft	16.4ft	19.7ft	23ft	26.2ft	29.5ft	32.8ft	36.1ft	39.4ft	42.7ft	45.9ft	49.2ft	52.5ft	55.8ft	59.1ft	62.3ft	65.6ft
4623lx	1156lx	514lx	289lx	185lx	128lx	94lx	72lx	57lx	46lx	38lx	32lx	27lx	24lx	21lx	18lx	16lx	14lx	13lx	12lx
429.5fc	107.4fc	47.7fcd	26.8fcd	17.2fcd	11.9fcd	8.8fcd	6.7fcd	5.3fcd	4.3fcd	3.5fcd	3fcd	2.5fcd	2.2fcd	1.9fcd	1.7fcd	1.5fcd	1.3fcd	1.2fcd	1.1fcd

Intensities in 0° c-plane

0°	2°	4°	6°	8°	10°	12°	14°	16°	18°	20°	22°	24°	26°	28°	30°	32°	34°	36°	38°
4623	4604	4549	4465	4341	4185	4000	3788	3549	3287	3005	2714	2418	2122	1830	1547	1278	1031	809	615
100%	100%	98%	97%	94%	91%	87%	82%	77%	71%	65%	59%	52%	46%	40%	33%	28%	22%	17%	13%

Intensities in 90° c-plane

0°	2°	4°	6°	8°	10°	12°	14°	16°	18°	20°	22°	24°	26°	28°	30°	32°	34°	36°	38°
4623	4598	4543	4455	4334	4185	3999	3784	3545	3286	3008	2719	2422	2124	1828	1540	1263	1012	790	598
100%	99%	98%	96%	94%	91%	87%	82%	77%	71%	65%	59%	52%	46%	40%	33%	27%	22%	17%	13%

Intensities in 180° c-plane

0°	2°	4°	6°	8°	10°	12°	14°	16°	18°	20°	22°	24°	26°	28°	30°	32°	34°	36°	38°
4623	4604	4549	4465	4341	4185	4000	3788	3549	3287	3005	2714	2418	2122	1830	1547	1278	1031	809	615
100%	100%	98%	97%	94%	91%	87%	82%	77%	71%	65%	59%	52%	46%	40%	33%	28%	22%	17%	13%

Intensities in 270° c-plane

0°	2°	4°	6°	8°	10°	12°	14°	16°	18°	20°	22°	24°	26°	28°	30°	32°	34°	36°	38°
4623	4598	4543	4455	4334	4185	3999	3784	3545	3286	3008	2719	2422	2124	1828	1540	1263	1012	790	598
100%	99%	98%	96%	94%	91%	87%	82%	77%	71%	65%	59%	52%	46%	40%	33%	27%	22%	17%	13%

Beam angle 50%	Field angle 10%	Cutoff angle 2,5%	Intensity ratio in 120° cone	Intensity ratio in 90° cone
49.5°	79.6°	95°	99.1%	96.9%